

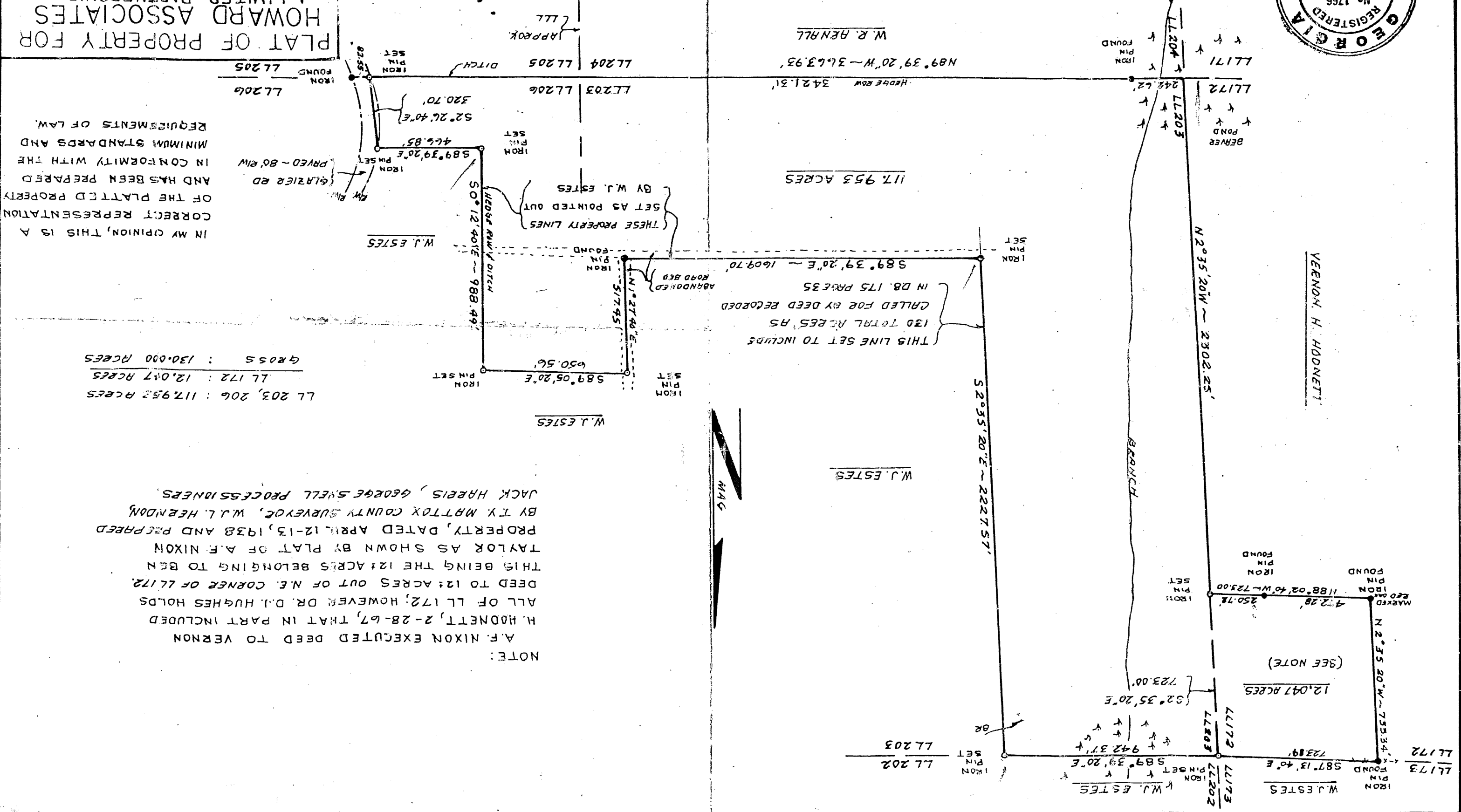


SURVEYED BY: *J.R. Christopher REG. L.S. GA 1766*
 DATE: 6-16-72
 SCALE: 1" = 400'
 LL172, 203, 206 LD 1" COWETA CTY, GA.
PLAT OF PROPERTY FOR HOWARD ASSOCIATES A LIMITED PARTNERSHIP

IN MY OPINION, THIS IS A CORRECT REPRESENTATION OF THE PLATTED PROPERTY AND HAS BEEN PREPARED IN CONFORMITY WITH THE MINIMUM STANDARDS AND REQUIREMENTS OF LAW.

LL 203, 206 : 117.952 ACRES
 LL 172 : 12.047 ACRES
 GROSS : 130.000 ACRES

NOTE:
 A.F. NIXON EXECUTED DEED TO VERNON H. HODNETT, 2-28-67, THAT IN PART INCLUDED ALL OF LL 172; HOWEVER DR. D.I. HUGHES HOLDS DEED TO 12.047 ACRES OUT OF N.E. CORNER OF LL 172. THIS BEING THE 12.047 ACRES BELONGING TO BEN TAYLOR AS SHOWN BY PLAT OF A.F. NIXON PROPERTY, DATED APRIL 12-13, 1938 AND PREPARED BY T.Y. MATTOX COUNTY SURVEYOR, W.L. HENDON, JACK HARRIS, GEORGE SWELL PROCESSIONERS.



VERNON H. HODNETT

W.R. HENRILL

W.J. ESTES

W.J. ESTES

(SEE NOTE)

MAG