

Recorded for map 0-1-1

Recorded August 16  
p.

# PLEASANT HILL FORESTS

GMD No 235

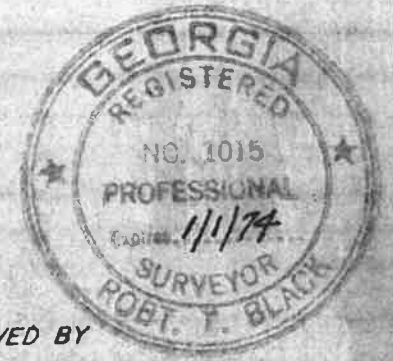
OGLETHORPE COUNTY GEORGIA

SCALE: 1" = 400'

SURVEYED JUNE, 1973

BY: W.T. DUNAHOO & ASSOCIATES

WINDER, GEORGIA



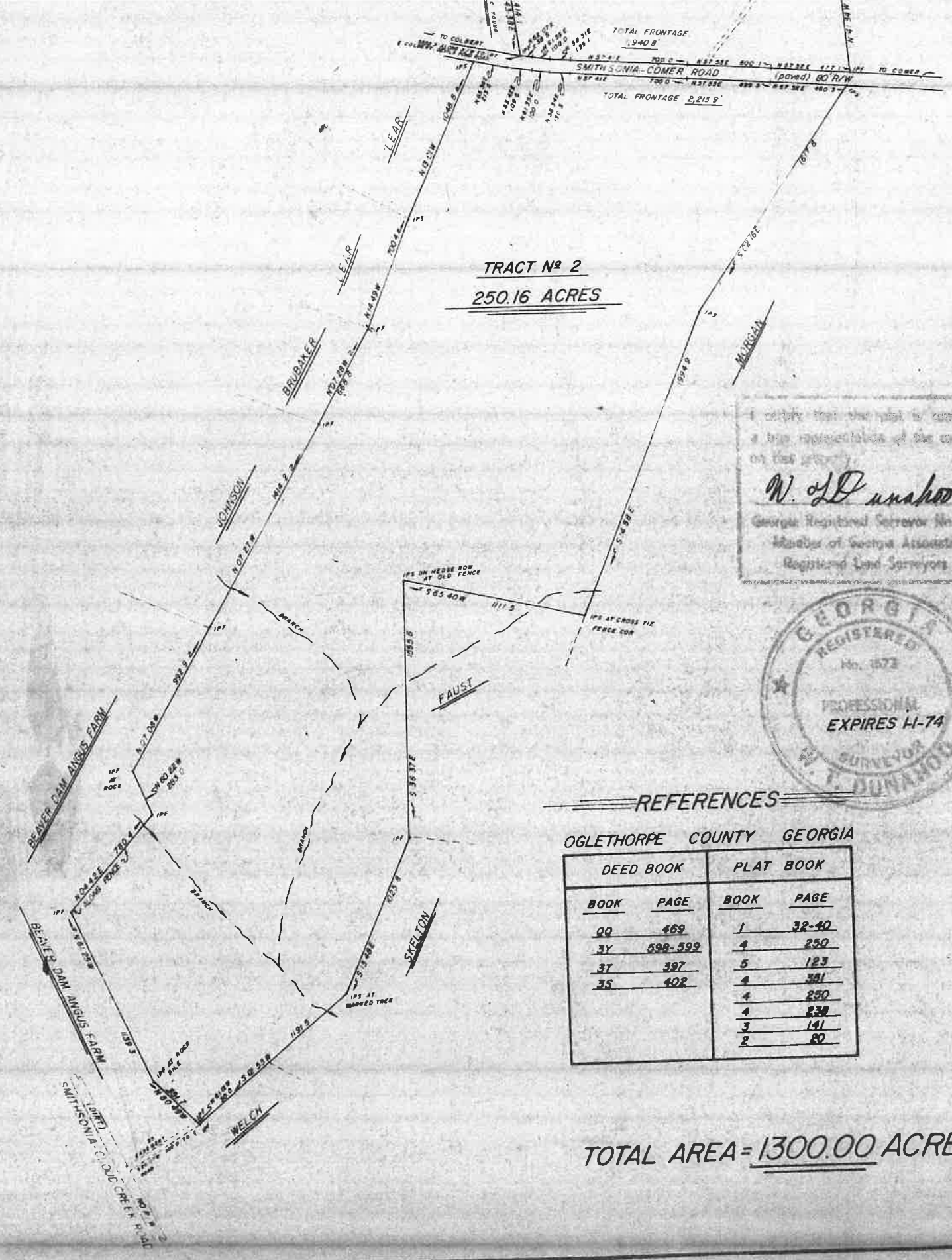
I certify that this map is correct and a true representation of the conditions on the ground.  
*W. T. Dunahoo*  
Georgia Registered Surveyor No. 1577  
Member of Georgia Association of Registered Land Surveyors



COMPUTATIONS CHECKED AND APPROVED BY

*Robert T. Black*  
ROBERT T. BLACK GEORGIA REG. SURVEYOR NO. 1015

REVISED 8-7-73



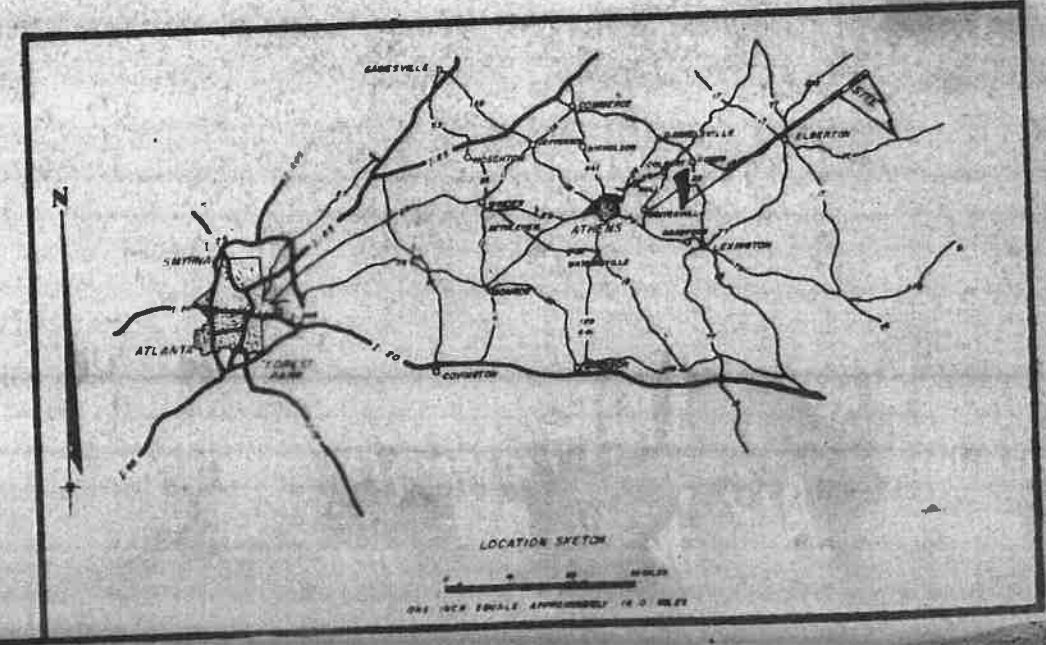
TRACT No 2  
250.16 ACRES

### REFERENCES

OGLETHORPE COUNTY GEORGIA

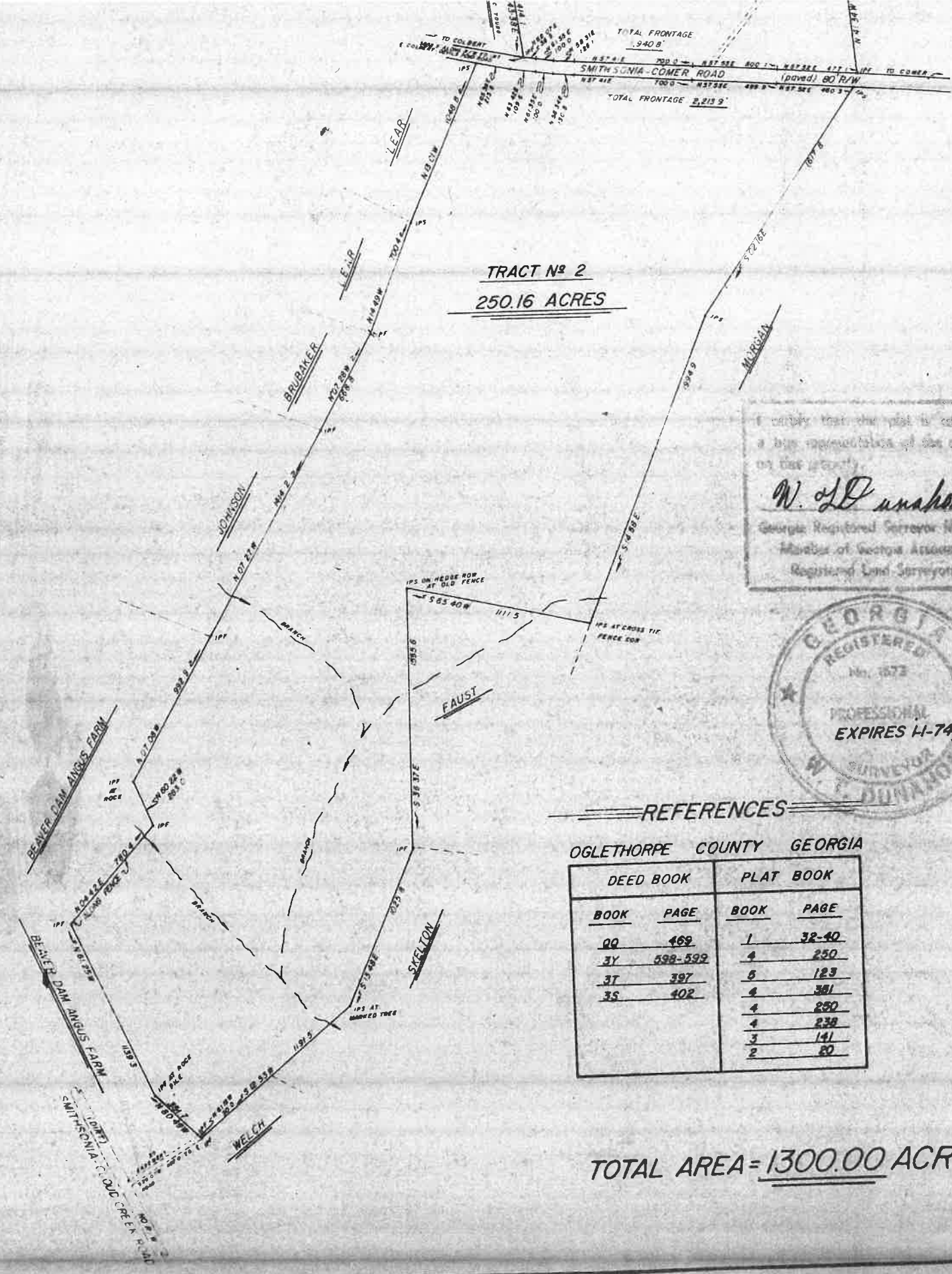
DEED BOOK		PLAT BOOK	
BOOK	PAGE	BOOK	PAGE
00	469	1	32-40
3Y	590-592	4	250
3T	397	5	123
3S	402	4	341
		4	250
		4	230
		3	141
		2	80

TOTAL AREA = 1300.00 ACRES



Recorded for W.O.S. 1-1

Recorded August 16 1974



# PLEASANT HILL FORESTS

GMD No 235

OGLETHORPE COUNTY GEORGIA

SCALE: 1" = 400'

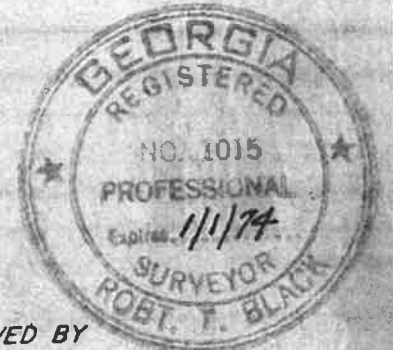
SURVEYED JUNE, 1973

BY: W. T. DUNAHOO & ASSOCIATES

WINDER, GEORGIA

I certify that this plat is correct and a true representation of the conditions on the ground.

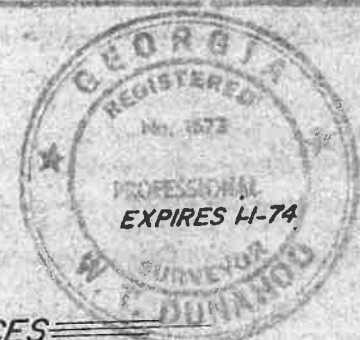
*W. T. Dunahoo*  
 Georgia Registered Surveyor No. 1577  
 Member of Georgia Association  
 Registered Land Surveyors



COMPUTATIONS CHECKED AND APPROVED BY

*Robert T. Black*  
 ROBERT T. BLACK GEORGIA REG. SURVEYOR NO. 1015

REVISED 8-7-73



### REFERENCES

OGLETHORPE COUNTY GEORGIA

DEED BOOK		PLAT BOOK	
BOOK	PAGE	BOOK	PAGE
00	469	1	32-40
3Y	598-599	4	250
3T	397	5	123
3S	402	4	381
		4	250
		4	238
		3	141
		2	80

TOTAL AREA = 1300.00 ACRES

