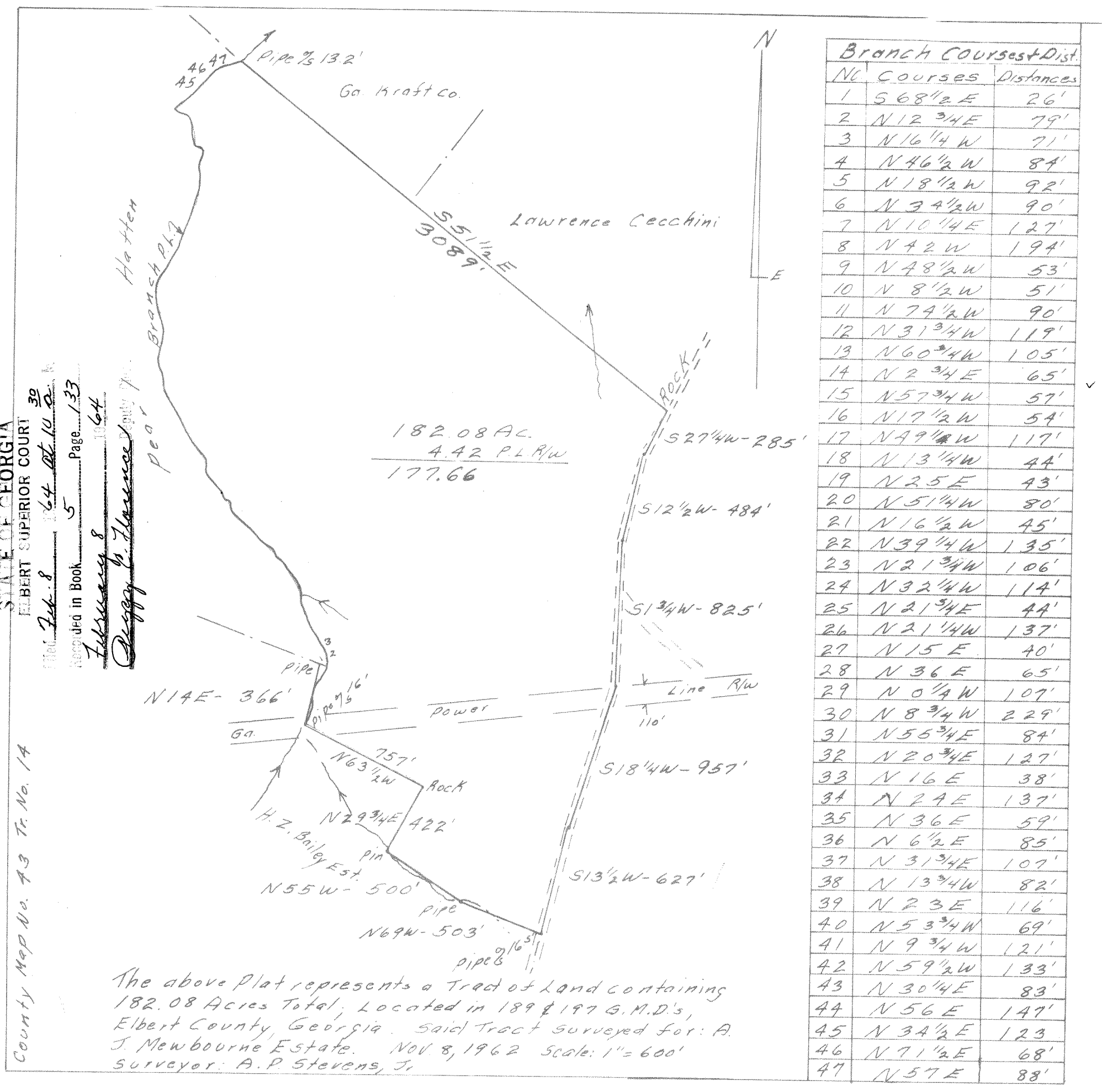


STATE OF GEORGIA
 ELBERT SUPERIOR COURT
 February 17, 64 at 9:30 a.m.
 Filed in Book 5 Page 133
 February 17, 1964
 Peggy C. Hesse

The above Plat represents
 a Parcel of Land containing
 4.0 Acres, Located in Pipe
 District, Elbert County,
 Georgia.
 Surveyed for: Homer Brady
 Scale: 1" = 100'
 Jan. 27, 1964
 Surveyor: A. P. Stevens, Jr.



STATE OF GEORGIA
 ELBERT SUPERIOR COURT
 Feb. 8, 1964 at 10:00 a.m.
 Recorded in Book 5 Page 133
 February 8, 1964
 Peggy C. Hesse

County Map No. 43 Tr. No. 14

The above Plat represents a Tract of Land containing
 182.08 Acres Total, Located in 189 & 197 G.M.D.'s,
 Elbert County, Georgia. Said Tract surveyed for: A.
 J. Newbourne Estate. Nov. 8, 1962 Scale: 1" = 600'
 Surveyor: A. P. Stevens, Jr.

No	Courses	Distances
1	S 68 1/2° E	26'
2	N 12 3/4° E	79'
3	N 16 1/4° W	71'
4	N 46 1/2° W	84'
5	N 18 1/2° W	92'
6	N 34 1/2° W	90'
7	N 10 1/4° E	127'
8	N 42° W	194'
9	N 48 1/2° W	53'
10	N 8 1/2° W	51'
11	N 74 1/2° W	90'
12	N 31 3/4° W	119'
13	N 60 3/4° W	105'
14	N 2 3/4° E	65'
15	N 57 3/4° W	57'
16	N 17 1/2° W	54'
17	N 49 1/4° W	117'
18	N 13 1/4° W	44'
19	N 25° E	43'
20	N 51 1/4° W	80'
21	N 16 1/2° W	45'
22	N 39 1/4° W	135'
23	N 21 3/4° W	106'
24	N 32 1/4° W	114'
25	N 21 3/4° E	44'
26	N 21 1/4° W	137'
27	N 15° E	40'
28	N 36° E	65'
29	N 0 1/4° W	107'
30	N 8 3/4° W	229'
31	N 55 3/4° E	84'
32	N 20 3/4° E	127'
33	N 16° E	38'
34	N 24° E	137'
35	N 36° E	59'
36	N 6 1/2° E	85'
37	N 31 3/4° E	107'
38	N 13 3/4° W	82'
39	N 23° E	116'
40	N 53 3/4° W	69'
41	N 9 3/4° W	121'
42	N 59 1/2° W	133'
43	N 30 1/4° E	83'
44	N 56° E	147'
45	N 34 1/2° E	123'
46	N 71 1/2° E	68'
47	N 57° E	88'